

SIMPLESEALERS.COM



Phone: (484)-223-0309.
Fax: (484)-223-0318
Email: Sales@simplesealers.com
1101 Hamilton St. Allentown
P.A. 18101 USA

PSF Series Manual

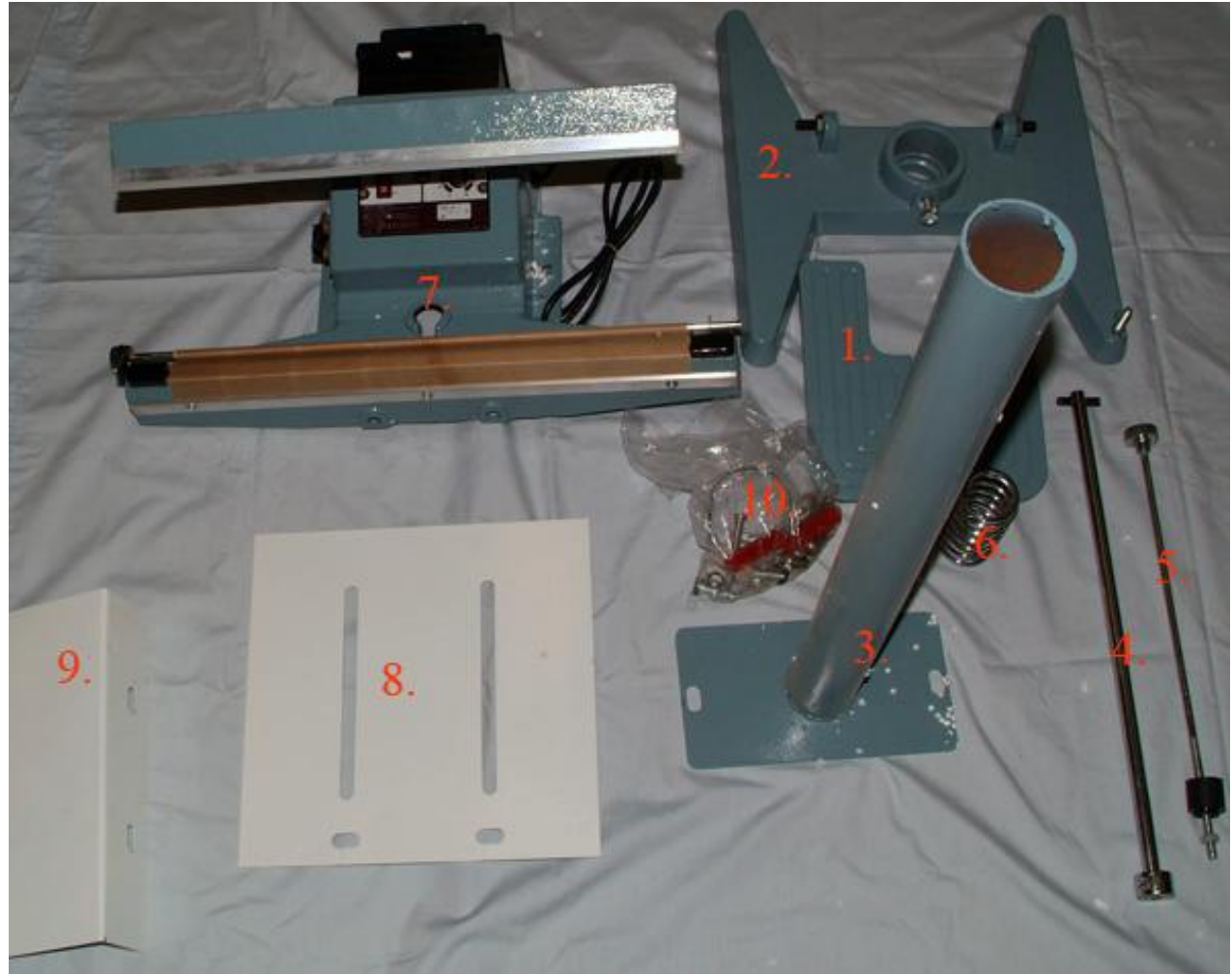
Foot Operated Impulse Sealers

Table Of Contents

1. Assembly
2. Assembly Cont.
3. Assembly Cont.
4. Assembly Cont.
5. Assembly Cont.
6. Assembly Cont.
7. Overview and Operation
8. Operation Cont.
9. Operation Cont.
10. Electrical Diagram
11. PFS Specs

1. Assembly

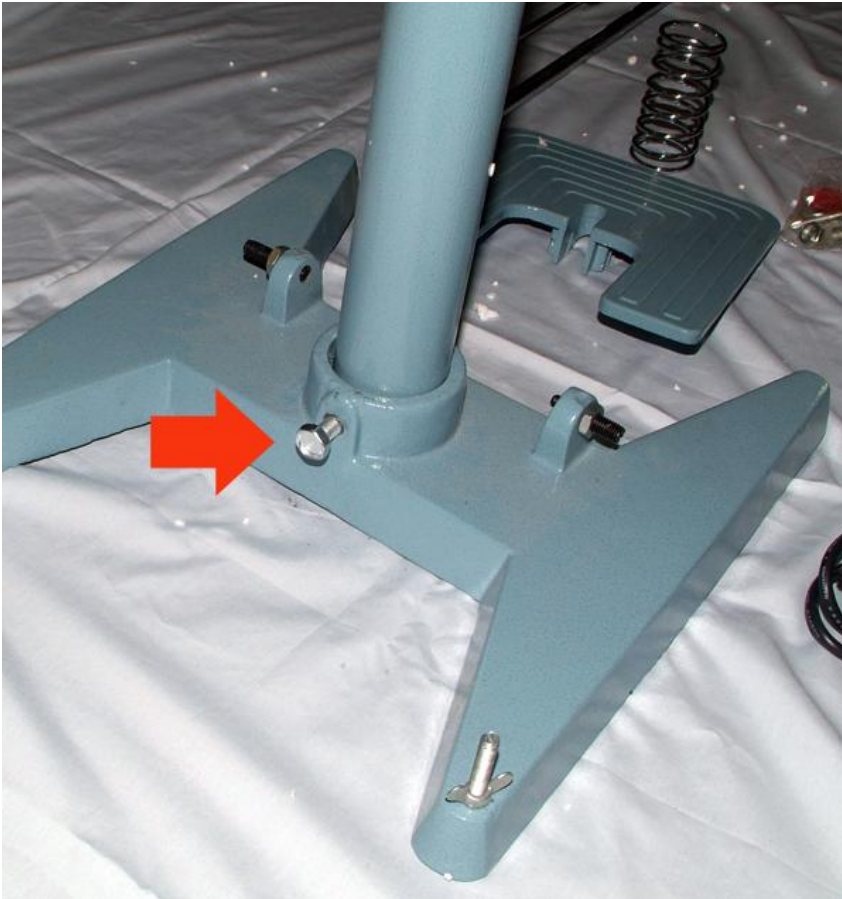
1. Unpack Box
2. Check Contents to make sure all parts are present
3. Make note of the numbers in the picture to the right as they will be referred to in the following sections.



2. Attach Support Pillar to Feet

Connect the support pillar (3.) to the sealer feet (2.)

Tighten the bolt in the sealer feet (2.)
To secure the pillar.



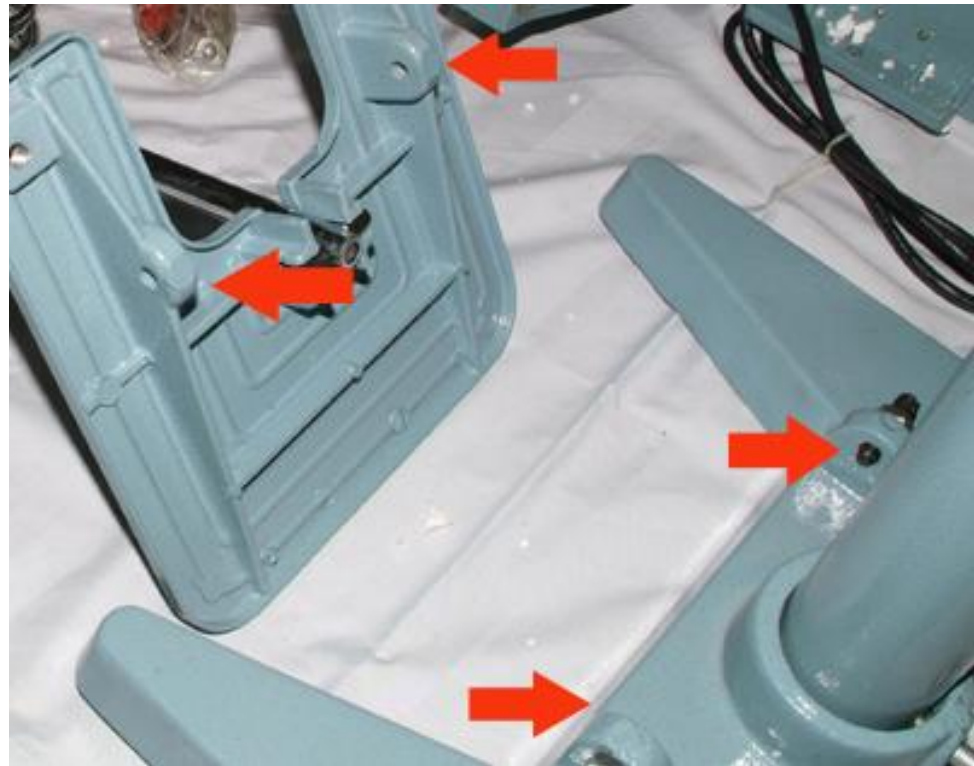
| Specification | Description | Unit | Quantity |
|---------------|----------------------|------|----------|
| 8mm | Heating wire | bar | 2 |
| 6mm | Inner hexagon wrench | pair | 1 |
| 3inch | Cross screwdriver | pair | 1* |
| 3inch | Minus screwdriver | pair | 1 |
| 8A | Fuse | pair | 2 |

Additional Items Included With Sealer

3. Attach Lower Connection Rod and Pedal



1. Slot Bottom Connecting Rod (4.) Into Pedal (1.)



2. Connect Foot Pedal (1.) to Base (2.)



3. Tighten Screws on Base (2.) to secure Foot Pedal (1.)

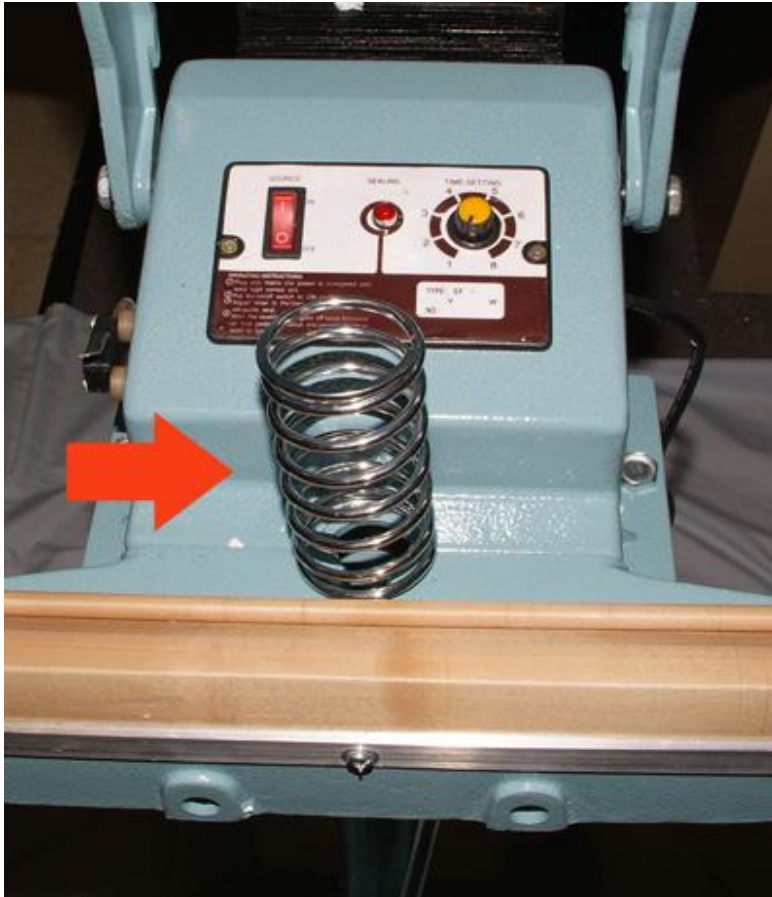
4. Attach Sealing Component



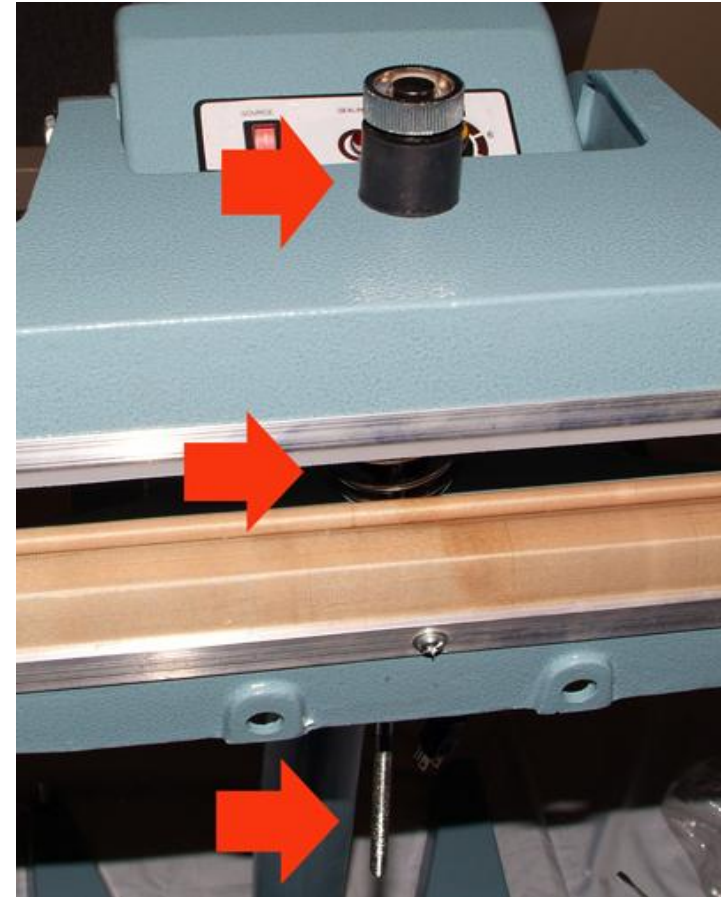
Lower Sealing Component (7.) onto the top of pillar (3.).

Secure with included bolts (10.) on both sides of the Machine. See arrows for Location.

5. Spring and Top Connection Rod



Open sealing jaws (7.) and place spring (6.) in center.

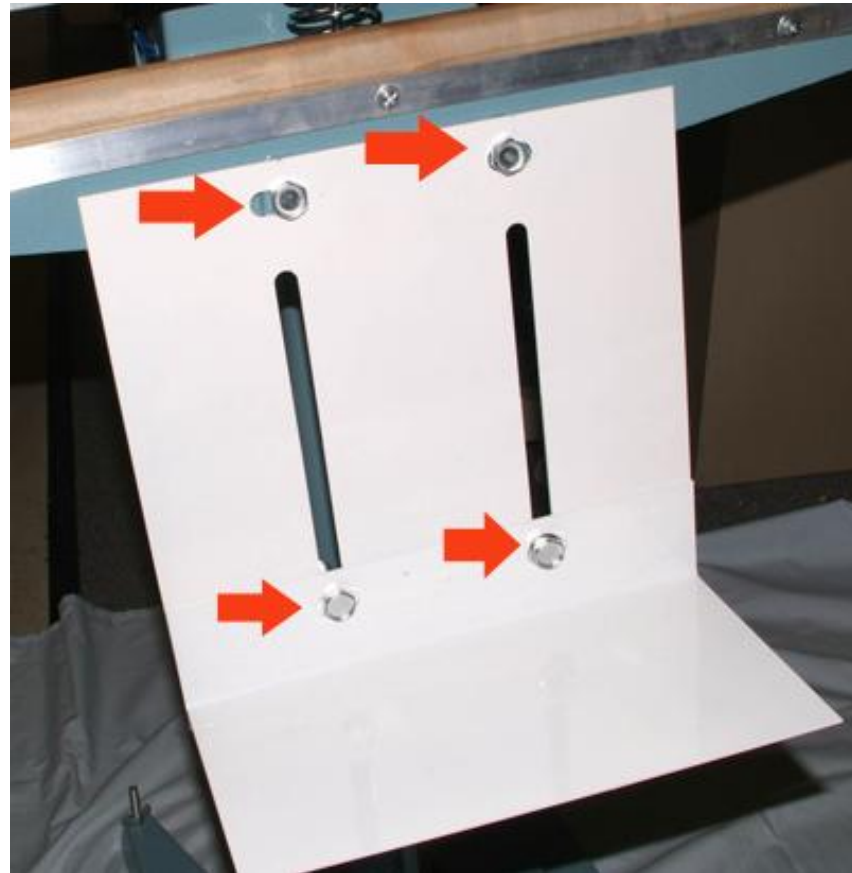


Remove bolt from upper rod (5.) and drop through hole in jaws And spring as shown.

6. Connect Upper and Lower Rod



Connect upper (5.) and (6.) lower rod with connector attached To lower rod.



Attach supporting shelf (8.& 9.) with provided bolts (10.)

7. Overview and Operation

The PSF series foot operated impulse sealers are used for sealing polyethylene, polypropylene and multi layer compounds. The PSF series features heavy duty aluminum construction, a high output power transformer and a heavy items shelf bracket.

Designed for sealing medium to heavy bags of agricultural products (rice, beans etc.) the PSF series can be used for any sealing application of similar products.

These sealers incorporate an electronic timing circuit that can be adjusted on the control panel. Longer times are used for thicker material, shorter times for thinner materials.

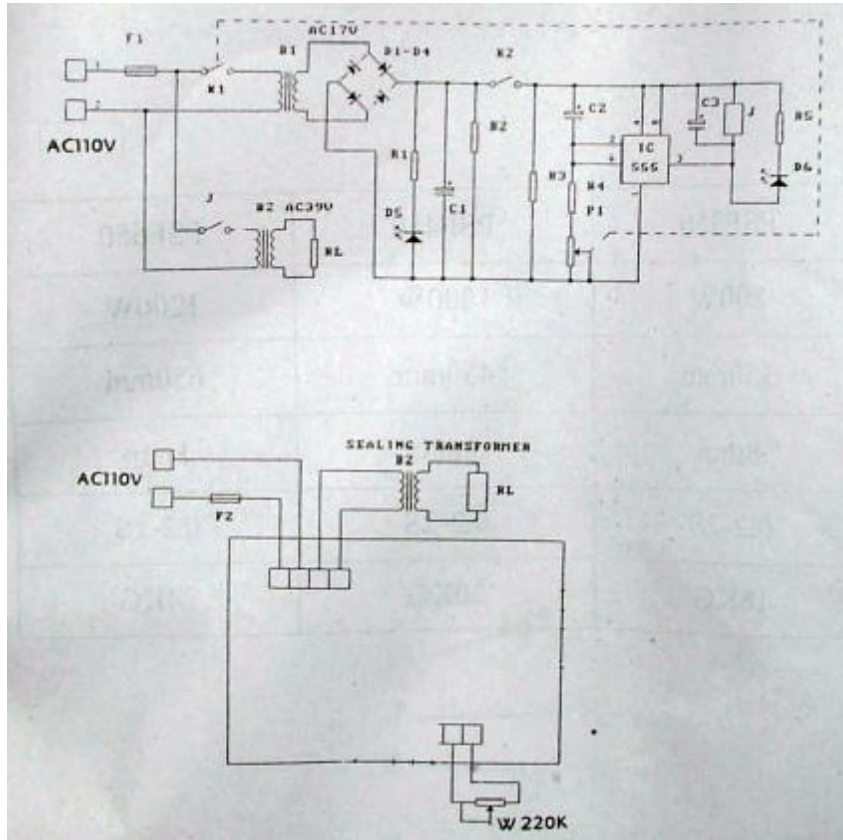
8. Operation

1. Switch on the power. Insert power plug into mains socket and use the power switch on the control panel.
2. Set timer switch. Thick material requires a longer sealing time than thin material. Start on a low setting and work up.
3. Place material to be sealed between sealing jaws.
4. Apply pressure to the foot pedal. With the jaws closed the red light on the control panel will turn on. Maintain pressure on the foot plate until the red light turns off.

9. Operation

5. When red light switches off. Remove pressure from foot pedal and jaws will open.
6. Remove sealed material from left to right – this will reduce the likelihood of material sticking and damaging the seal.

10. Electrical Diagram



| Symbol | Specification | Symbol | Specification |
|--------|---------------|--------|-----------------------|
| F1 | FUSE 8A | D1 -D4 | IN4007 |
| R1 | 1/4W 5.1K | D5 | LAMP |
| R2 | 1/4W 10K | D6 | LAMP |
| R3 | 1/4W 10K | W | WH137-220K RESISTOR |
| R4 | 1/4W 10K | B1 | AC110V-AC17V |
| R5 | 1/4W 5.1K | B2 | AC200V - AC39V |
| C1 | 25V220uF | K1 | FOOT SWITCH |
| C2 | 35V20uF | K2 | WH137-220K SWITCH |
| C3 | 35V47uF | IC | NE555 |
| J | T90 - 12V | RL | HEATER 2.5mm X 0.15mm |

11. PFS Specs

| Model | PSF350 | PSF450 | PSF650 |
|----------------|--------|--------|--------|
| Pulse power | 800W | 1000W | 1200W |
| Sealing length | 350mm | 450mm | 650mm |
| Sealing width | 8mm | 8mm | 8mm |
| Heating time | 0.2-2S | 0.2-2S | 0.2-2S |
| weight | 18KG | 20KG | 24KG |

ALL PFS foot sealers are basically the same. Sealing width Varies by model and is incorporate in the model number.